

CONSTRUCTION RISK MANAGEMENT

Leaders in Risk Engineering and Safety Solutions
An ISO 9001:2015 Certified Company

ABOUT US

Cholamandalam MS Risk Services Ltd., is a 50:50 joint venture between the INR 300 billion Murugappa Group and Mitsui Sumitomo Insurance Group, Japan. With over 200 risk engineering experts, we are the largest employer of Environment, Health & Safety specialists in India and offer comprehensive risk management and engineering solutions.

With two decades of experience and over 8500 consulting projects we are able to offer best in class, customized services to organizations to optimize their EHS performance, and set new benchmarks in safety performance.

We are also strengthened by our strategic partnerships with Arcadis, a global EHS consulting company ranked 5th in the world, and our partner status with Inogen, a global corporation providing multi-nationals with consistent and sustainable EHS and safety solutions world wide.

We excel in providing a spectrum of services across the lifecycle of a project - from the conceptualization stage, to design, until decommissioning be it in Environment Management and Sustainability, Process Safety, Electrical Safety, Logistics Risk Consulting and Construction Safety.

Since our inception we've had the experience gathered from across 42 sectors including Automobile, IT/Telecom, Pharmaceuticals, Fertilizers, Chemical, Power Plants, Oil & Gas, Cements, Construction, Textile, Retail etc.

Chola MS Risk Services also offers EHS Training, Competency building and Assessment services through its Safety Academy. Besides offering Classroom based training for Corporates, it extensively uses the power of technology to run virtual classrooms, blended learning and online e-learning courses on a wide variety of subjects in risk engineering and safety.

Process Safety



Environment Consulting



Construction Safety



Electrical Safety



Logistics Safety



Insurance Support Services



THE GLOBAL BOOM

The global construction industry is expected to grow over the next decade—especially in the rapidly emerging economies of Asia, Latin America, the Middle East, Africa and Eastern Europe. Fuelled by urbanization, globalization, Infrastructure renewal and the burgeoning needs of developing “megacities,” construction in emerging markets is expected to double within a decade and will become a \$6.7 trillion business by 2020, accounting for some 55 percent of global construction output, according to the “Global Construction 2020” report published by Global Construction Perspectives and Oxford Economics.

India's construction industry is the country's second largest employer and contributor to economic activity, after agriculture. According to government estimates, it grew by 80 per cent in the last four years, from \$78 billion in 2013 to approximately \$140 billion this year. It is estimated that 7.5 crore construction workers are engaged in this industry. But sadly, every year, hundreds of the men and women workers either fall to their deaths, or are electrocuted, or are buried under rubble. Several repeated accidents and deaths have happened at construction of infrastructural projects like power plants, airports, national highways and roads. [Source: *Fatal Heights: The Untold Deaths Of India's Construction Workers*—a report compiled by NDTV | Aug 2017]

In addition to cost of human injury and death, the accidents are unduly expensive in terms of damage of property and delays in completion of project.



WHAT WE OFFER

Considering the many challenges faced by the construction industry, in particular pertaining to an unskilled & migrant work force, project delays and cost over-runs, we've evolved a *suite of services* towards a **Comprehensive Construction Safety at Site Excellence Program**. The services are based upon our immense experience in working on mega infrastructure projects for some of the best power plants, Oil and Gas, Cement, Chemical, Telecom, Steel and Real estate companies in India.

We therefore fully understand your requirement in implementing a successful safety management system in any type, scale and stage of a construction project.

Construction Safety Management



Expert & Manpower Deployment



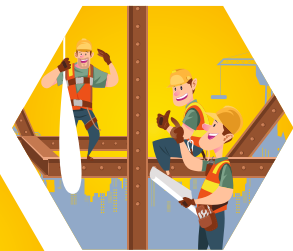
Managed Training Services



Audits & Certification



Performance Monitoring



Physical Technical Due Diligence of Buildings



Safety Culture Transformation

Statutory Review of Technical Documentation



Contractor Safety Management & Evaluation





WAYS IN WHICH WE CAN HELP YOU

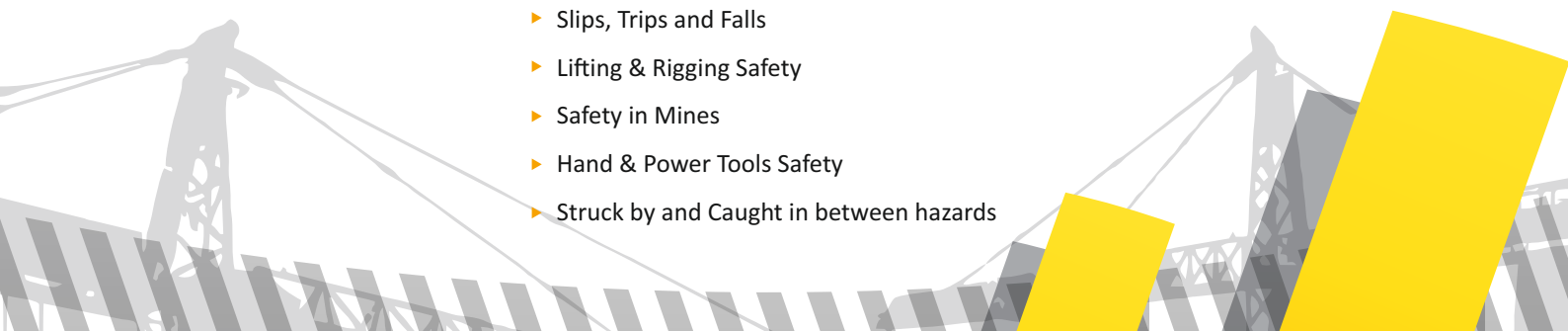
Besides these we offer comprehensive services towards achieving Zero Accidents through an integrated approach of Process Safety Engineering (Hazid, Hazop, FEMA, QRA, PSSR, PHSER, F&G mapping etc) and Construction Safety Management during the project's life cycle.

1. We can help you in implementing globally recognized safety practices & sustaining it throughout the construction phase to **prevent injuries, fatalities and business interruption.**
2. We can work with you to establish a Safety Culture and cause a transformation in behaviour, through our **behaviour based safety programs & behaviour specialists.**
3. We do **intensive Gap Analysis Studies to identify core issues** and help you prioritize the areas of immediate focus.
4. Preparation of a **Construction Safety Manual & Contractor evaluation guidelines.**
5. Providing robust **Competency Building services** in the team and setting up of a world-class Training centre at site; be it **craft specific**, supervisory or general induction to safety to site.
6. Manpower deployment of Safety Experts & Domain Experts (**Scaffolding, Rigging & Lifting, Fire & Electrical**).
7. We can also provide you consultancy on **Shutdown Management Services, Fire fighting system design verification and performance test & Accident Investigations.**
8. We perform **Scaffolding Inspection & Certification services.**
9. Performance management by conducting periodic **Construction Safety Audits & monitoring Key Metrics.**
10. Safety culture transformation through the **unique Chola SUN Model.**



Transform your safety training into an extra ordinary experience

We have the experience of having delivered 5000 training hours. Some of our popular programs include the following.

- ▶ New worker Orientation
 - ▶ Legal requirements in Construction Projects
 - ▶ Safety in Scaffolding
 - ▶ Work at Height & Fall Protection
 - ▶ Material Handling
 - ▶ Construction Safety Management at Site for Supervisors
 - ▶ Excavation & Trenching Safety
 - ▶ Gas Cutting, Welding and Grinding Safety [Safety in Hot Works]
 - ▶ Slips, Trips and Falls
 - ▶ Lifting & Rigging Safety
 - ▶ Safety in Mines
 - ▶ Hand & Power Tools Safety
 - ▶ Struck by and Caught in between hazards
- 



WHY PARTNER WITH US

- A proven track record of having achieved 80 million accident-free man-hours at the construction site of one of the largest IT complexes in Asia
- Awarded a silver medal for recording 5 million accident-free man-hours at the construction site of a world leader in cement manufacturing
- Designed & monitored the complete Construction Safety Management program for a Fortune 500 company in India and completed the project with “ZERO INJURY”
- Proven capability to undertake Design, Review & Implement EHS systems at the site and mentor the individual “Client Champions” to take construction forward during the operation stage
- Helped Cement majors to achieve global standards in implementation of scaffolding safety
- 600 building safety audits conducted in India.
- 75% of all cement plants in India have been audited by us
- Jointly worked with the Confederation of Indian Industries(CII) to co-author a publication on “Construction Industry–A way forward towards Non-fatal & Injury free work place”
- We have a sterling record of providing 5000 training hours in HSE across the globe , and we offer some of the best e-courses today in this subject

A photograph of a construction site at sunset. The sky is a vibrant orange and red, with the sun low on the horizon. Silhouettes of several concrete pillars with rebar protruding from their tops are visible against the bright sky. A few workers are seen in silhouette near the base of one of the pillars. The image is framed by a dark grey, curved border with yellow accents.

A way forward for a Non Fatal & Injury Free Work Place

Cholamandalam MS Risk Services Ltd,
Dare House, 4th Floor, No.2 NSC Bose Road, Chennai 600 001
Ph: +91 (44) 3044 5620-30 | Fax: + 91 (44) 3044 5550
W:www.cholarisk.com | <http://training.cholarisk.com> | E: inquiry@cholams.murugappa.com