

About us

Cholamandalam MS Risk Services (CMSRSL) is a joint venture between Mitsui Sumitomo Insurance Group and Finance Company Ltd., the financial services arm of the Murugappa Group.

CMSRSL offers specialized and innovative risk management solutions tailored to suit the needs of different businesses in India and rest of Asia.

Services Offered

Safety:

- Comprehensive Safety Audit
- Safety Perception Survey
- Risk Analysis and Disaster Management Planning

Electrical Safety:

- Comprehensive Electrical Safety Audit
- Review of Hazardous Area Classification
- Lightning Protection Risk Assessment
- Hotspot Detection Survey / Thermography

Fire Safety:

- Review of Fire Protection System
- Fire Safety Audit / Fire Risk Assessment

Environment:

- Environmental Impact Assessment
- Environmental Audit
- Environmental Due Diligence
- Water and Wastewater Management

Risk Management:

- Insurance Planning and Auditing
- Enterprise wide Risk Management
- Process Risk Assessment
- Safety and Risk Management Training

www.cholarisk.com



- Webcrawler for global Risk Management news
- Risk Manager's Corner
- Safety Tools
- Free Professional Safety Advice
- Technical Presentations

Partial List of Clientele:

- ❖ Hindustan Petroleum Corporation Limited
- ❖ Bharat Petroleum Corporation Limited
- ❖ Chennai Petroleum Corporation Limited
- ❖ Mangalore Refinery and Petrochemicals Limited
- ❖ Cairn Energy Pty.
- ❖ East India Petroleum Limited
- ❖ Chambal Fertilizers and Chemicals Limited
- ❖ Coromandel Fertilizers Limited
- ❖ Bombay Dyeing Limited
- ❖ Hind Lever Chemicals Limited
- ❖ Ahmedabad Electricity Company
- ❖ GMR Energy Private Limited, TanirBavi
- ❖ ST-CMS Electric Company
- ❖ Orchid Chemicals and Pharmaceuticals
- ❖ Shasun Drugs and Chemicals Limited
- ❖ Toyota Kirloskar Motors
- ❖ Aditya Cements
- ❖ Vikram Cements
- ❖ Visaka Cements
- ❖ TI Diamond Chain
- ❖ Gujarat Paguthan Energy Corporation
- ❖ SPIC

P G Sreejith
 Manager – Risk Services
Cholamandalam MS Risk Services Ltd
 DARE House, II Floor, 234, NSC Bose Road, Chennai 600 001, INDIA
 Tel : +91 44 2530 7430 / 31 / 32 / 33 Fax : +91 44 5216 6001
 Mobile: +91 98403 58300
 Email: sreejithPG@chola.murugappa.com

Mr. Alok Agrwal
 Deputy Manager – Risk Services
Cholamandalam MS Risk Services
 9th Floor, Kanchenjunga Building, Barakhamba Road
 New Delhi 110 001, INDIA
 Tel : +91 11 51512392 / 97 Fax: +91 11 51512394
 Mobile: +91 98183 26920 Email: agrwalA@chola.murugappa.com

ISO 9001
 ISO 14001
 OHSAS 18001
 Next ?

Safety Perception Survey

– the answer for those organizations where safety is a way of life

From
Cholamandalam MS Risk Services

Manage Risks Profitably

www.cholarisk.com

Introduction

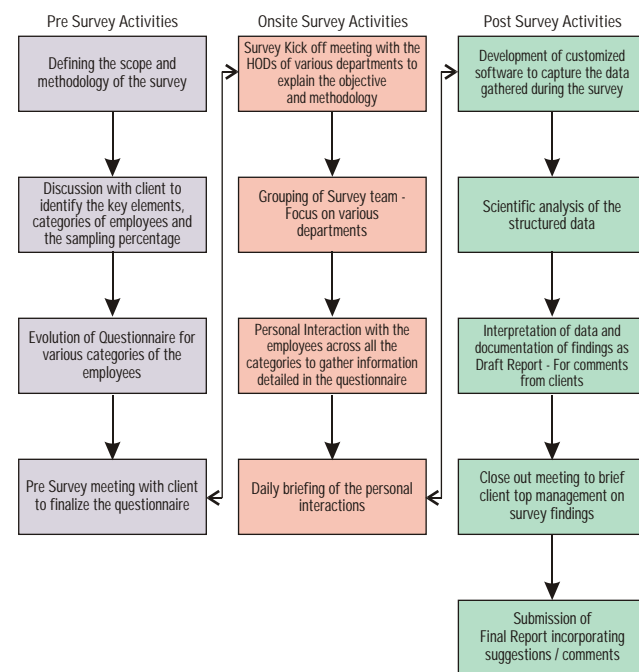
Culture of an organization plays a lead role in why employees behave the way they do. Safety Perception Survey (SPS) is accepted as a measure of the organizational health and safety culture. SPS, a lead indicator of the safety performance of an organization, also helps managements to evaluate the effectiveness of their safety programmes and get a feedback from grass root levels.

For proactive organizations, who strive for continuous improvement in safety i.e., beyond safety certifications like OHSAS 18001, ISRS, British Safety Council's Sword of Honour etc., SPS is logically the next step.

Why SPS?

- ❖ To evaluate the safety perception and hence safety culture of employees with reference to occupational health and safety issues
- ❖ To assess employee involvement level in the existing safety programme
- ❖ To assess the employee perception regarding the existing safety management system

Key Steps in SPS



Elements considered for survey:

17 elements are included in the survey questionnaire under 4 broad categories:

- ◆ Safety Leadership
- ◆ Safety Management
- ◆ Safety Culture
- ◆ Safety Promotion

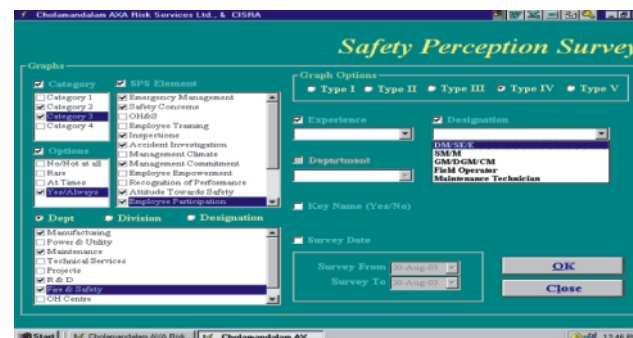
Employee Categorization:

Mutually agreeable sampling size from the following employee categories:

1. Top Management
2. Senior and Middle Management
3. Non-management Staff
4. Contract Employees

Salient features of SPS Process

- ☆ Evolution of customized questionnaires specific to the needs of 4 employee categories but based on the 17 elements relevant to the safety management system of the organization.
- ☆ Defining ASPL (Acceptable Safety Perception Level) for benchmarking
- ☆ One to one personal interaction with the employees
- ☆ Analysis of collected data using specialized software
- ☆ Interpretation of results
- ☆ Software used for SPS



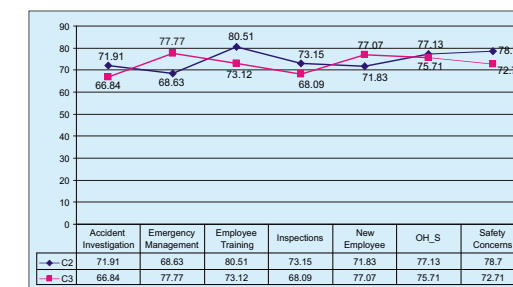
CMSRSL has developed a customized software for easy and accurate generation of reports

Benefits of SPS

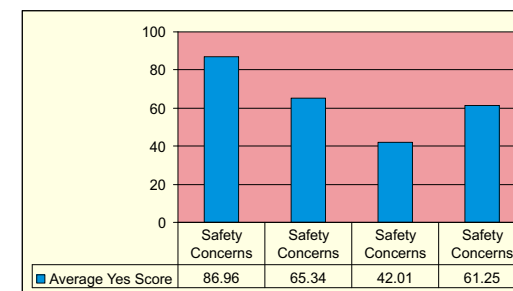
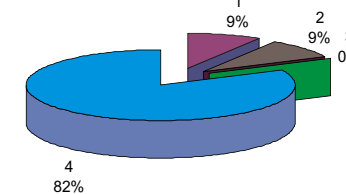
- ❖ Mid course correction of safety programme
- ❖ Inputs from grass root level for further improving safety
- ❖ A measure of the organization's safety culture

Report

Report would consist of graphs and inferences for various comparisons – across categories based on elements, within categories on a specific element etc.



C1 COMMUNICATION



Team

SPS survey team draws expertise from carrying out similar surveys across oil and gas industry. All the audit team members have more than a decade of consulting experience