

About us

Cholamandalam MS Risk Services (CMSRSI) is a joint venture between Mitsui Sumitomo Insurance Group and Finance Company Ltd., the financial services arm of the Murugappa Group.

CMSRSI offers specialized and innovative risk management solutions tailored to suit the needs of different businesses in India and rest of Asia.

Services Offered

- Safety:**
- Comprehensive Safety Audit
 - Safety Perception Survey
 - Risk Analysis and Disaster Management Planning
- Electrical Safety:**
- Comprehensive Electrical Safety Audit
 - Review of Hazardous Area Classification
 - Lightning Protection Risk Assessment
 - Hotspot Detection Survey / Thermography
- Fire Safety:**
- Review of Fire Protection System
 - Fire Safety Audit / Fire Risk Assessment
- Environment:**
- Environmental Impact Assessment
 - Environmental Audit
 - Environmental Due Diligence
- Water and Wastewater Management**
- Risk Management:**
- Insurance Planning and Auditing
 - Enterprise wide Risk Management
 - Process Risk Assessment
 - Safety and Risk Management Training

www.cholarisk.com



- Webmaster for global Risk Management news
- Risk Manager's Corner
- Safety Tools
- Free Professional Safety Advice
- Technical Presentations

- Partial List of Clients:**
- ❖ Hindustan Petroleum Corporation Limited
 - ❖ Bharat Petroleum Corporation Limited
 - ❖ Chennai Petroleum Corporation Limited
 - ❖ Mangalore Refinery and Petrochemicals Limited
 - ❖ Cairn Energy Pty.
 - ❖ East India Petroleum Limited
 - ❖ Chambal Fertilizers and Chemicals Limited
 - ❖ Coromandel Fertilizers Limited
 - ❖ Bombay Dyeing Limited
 - ❖ Hind Lever Chemicals Limited
 - ❖ Ahmedabad Electricity Company
 - ❖ GMR Energy Private Limited, Tani, Bavi
 - ❖ ST-CMS Electric Company
 - ❖ Orchid Chemicals and Pharmaceuticals
 - ❖ Shasun Drugs and Chemicals Limited
 - ❖ Toyota Kirloskar Motors
 - ❖ Aditya Cements
 - ❖ Vikram Cements
 - ❖ Visaka Cements
 - ❖ TTDiamond Chain
 - ❖ Gujarat Pagethan Energy Corporation
 - ❖ SPIC

ISO 9001
ISO 14001
OHSAS 18001

Next ?



Safety Perception Survey

the answer for those organizations where

safety is a way of life

www.cholarisk.com

Cholamandalam MS Risk Services Ltd.,
Dare House, 2nd Floor,
No.2, N.S.C., Bose Road,
Parrys, Chennai-600 001, India
Tel:- +91-44-30445400; Fax:-+91-44-30445550
inquiry@cholams.murugappa.com
www.cholarisk.com

Introduction

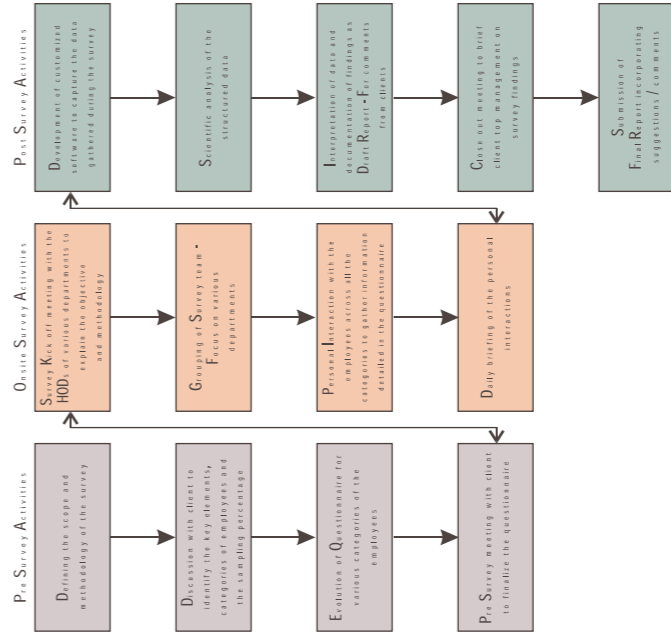
Culture of an organization plays a lead role in why employees behave the way they do. **Safety Perception Survey (SPS)** is accepted as a measure of the organizational health and safety culture. **SPS**, a lead indicator of the safety performance of an organization, also helps managements to evaluate the effectiveness of their safety programmes and get a feedback from grass root levels.

For proactive organizations, who strive for continuous improvement in safety i.e., beyond safety certifications like **OHSAS 18001**, **ISRS**, **British Safety Council's Sword of Honour** etc., **SPS** is logically the next step.

Why SPS?

- To evaluate the safety perception and hence safety culture of employees with reference to occupational health and safety issues
- To assess employee involvement level in the existing safety programme
- To assess the employee perception regarding the existing safety management system

Key Steps in SPS



Elements considered for survey:
 17 elements are included in the survey questionnaire under 4 broad categories:

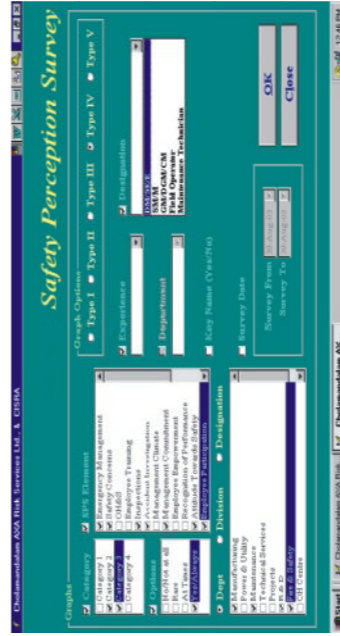
- Safety Leadership
- Safety Management
- Safety Culture
- Safety Promotion

Employee Categorization:
 Mutually agreeable sampling size from the following employee categories:

- Top Management
- Senior and Middle Management
- Non-management Staff
- Contract Employees

Salient features of SPS Process

- Evolution of customized questionnaires specific to the needs of 4 employee categories but based on the 17 elements relevant to the safety management system of the organization.
- Defining **ASPL (Acceptable Safety Perception Level)** for benchmarking
- One to one personal interaction with the employees
- Analysis of collected data using specialized software
- Interpretation of results
- Software used for SPS



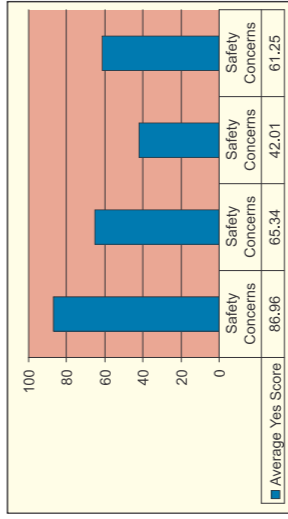
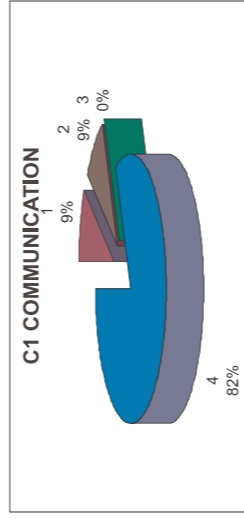
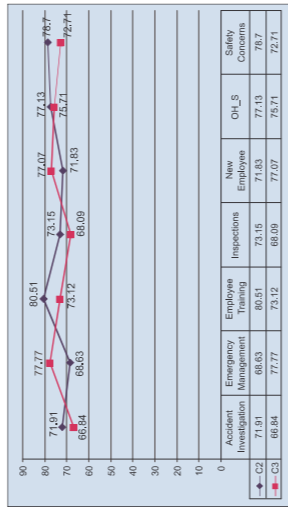
CMSRSL has developed a customized software for easy and accurate generation of reports

Benefits of SPS

- Mid course correction of safety programme
- Inputs from grass root level for further improving safety
- A measure of the organization's safety culture

Report

Report would consist of graphs and inferences for various comparisons — across categories based on elements, within categories on a specific element etc.



Team

SPS survey team draws expertise from carrying out similar surveys across oil and gas industry. All the audit team members have more than a decade of consulting experience